

# 2020 CATALOGUE

Diagnostic Solutions for Human Infectious Diseases

# Diagnostic Solutions for Human Infectious Diseases



02 Vircell

04 **INFECTIOUS IMMUNOLOGY**

06 **VirClia®**

Fully automated indirect chemiluminescent immunoassays (CLIA) in monotest format for the diagnosis of infectious diseases.

11 **ELISA**

Enzyme-linked immunosorbent assays for detecting antibodies against infectious diseases in human serum/plasma samples.

14 **DFA**

Direct fluorescence assays for antigen detection in cell culture and clinical samples.

15 **IFA**

Indirect immunofluorescence assays to detect antibodies against viruses, bacteria, parasites and fungi.

17 **Agglutination**

The complete solution for the diagnosis of human brucellosis. Brucellacapt®, based on an immunocapture technique, detects non-agglutinating IgG and IgA antibodies, as well as the agglutinating antibodies. Rose Bengal is a fast, simple and sensitive assay widely used as a screening test in the diagnosis of brucellosis.

17 **VIRapid®**

Immunochromatographic tests for antigen and antibody detection against infectious diseases. High value-added products in multitest format.

18 **MOLECULAR DIAGNOSTICS**

20 **Speed-oligo®**

PCR-based method coupled to a strip device for a quick multiplex detection of infectious diseases.

21 **qSPEED-OLIGO®**

Multiplex Real Time PCR testing of comprehensive panels.  
Two-step procedure: screening and hybridization of positive samples.

22 **AmpliRun®**

Quantified positive amplification controls that contain the complete purified, microbial genome of the infectious agent.

26 **AmpliRun® Total**

Independent quality controls to monitor the entire NAT process, including extraction, amplification and detection. These external controls contain the complete inactivated microorganism in a matrix that mimics human specimens. Panels available.

28 **OTHERS**

30 **Transport Medium**

Collection and transport system for viruses, chlamydia and mycoplasma.

31 **Cell Lines**

Accessible cell culture for human clinical virology. Ready-to-use and bulk presentations.

32 **Terms and Conditions**

# Commitment to Quality and the Environment

Quality in our sector means responsibility: **Vircell** pursues excellence in quality at every stage of production, from research and development to customer support.

Accreditation to international standards ensures confidence in the quality and consistency of the products and services provided by **Vircell**, and demonstrates compliance to internationally agreed standards.

Additionally, **Vircell** participates in several External Quality Assessment (EQA) programs to ensure the reliability of our laboratory results, such as QCDCM, UKNEQAS, SEIMC, LABQUALITY, INSTAND, CAP, RCPAQAP, among others.



## ISO 13485

Since 2006, **Vircell** has fulfilled the requirements on design, development and manufacturing of *in vitro* diagnostic medical devices according to ISO 13485.



## CE mark

Most of **Vircell** products are CE certified, fulfilling the European Directive 98/79/CE for *in vitro* diagnostic products in the context of the European Union.



## ISO 9001 AENOR – IQNet

**Vircell** has implemented and maintains a Quality Management System which has fulfilled the requirements of the standard ISO 9001 since 1998.



## ISO 14001 AENOR – IQNet

ISO 14001 is a globally recognized standard for an environmental management system. This standard defines the requirements for controlling and improving the organization's environmental impact. This standard was first implemented by **Vircell** in 2016.





# Leaders in infectious diseases testing

Founded in 1991, **Vircell** is a leading developer of ready-to-use kits for the diagnosis of infectious diseases with successful operations in over 85 countries.

**Vircell**, highly specialized in research & development, offers complete diagnostics solutions by means of different techniques.

Since the very beginning, we have focused on producing the highest quality reagents alongside providing accessible technical staff to ensure prompt and personal assistance in their use.



## **Vircell, S.L.**

**Headquarters & Manufacturing Plant**  
Parque Tecnológico de la Salud, Avicena 8  
18016 Granada, Spain  
Tel: +34 958 441 264  
Email: [info@vircell.com](mailto:info@vircell.com)

## **Vircell Spain, S.L.U.**

**Headquarters**  
Pol. Ind. Dos de Octubre,  
Plaza Domínguez Ortiz 1  
18320 Santa Fe, Granada  
Tel +34 958 181 106  
Email: [pedidos@vircell.com](mailto:pedidos@vircell.com)

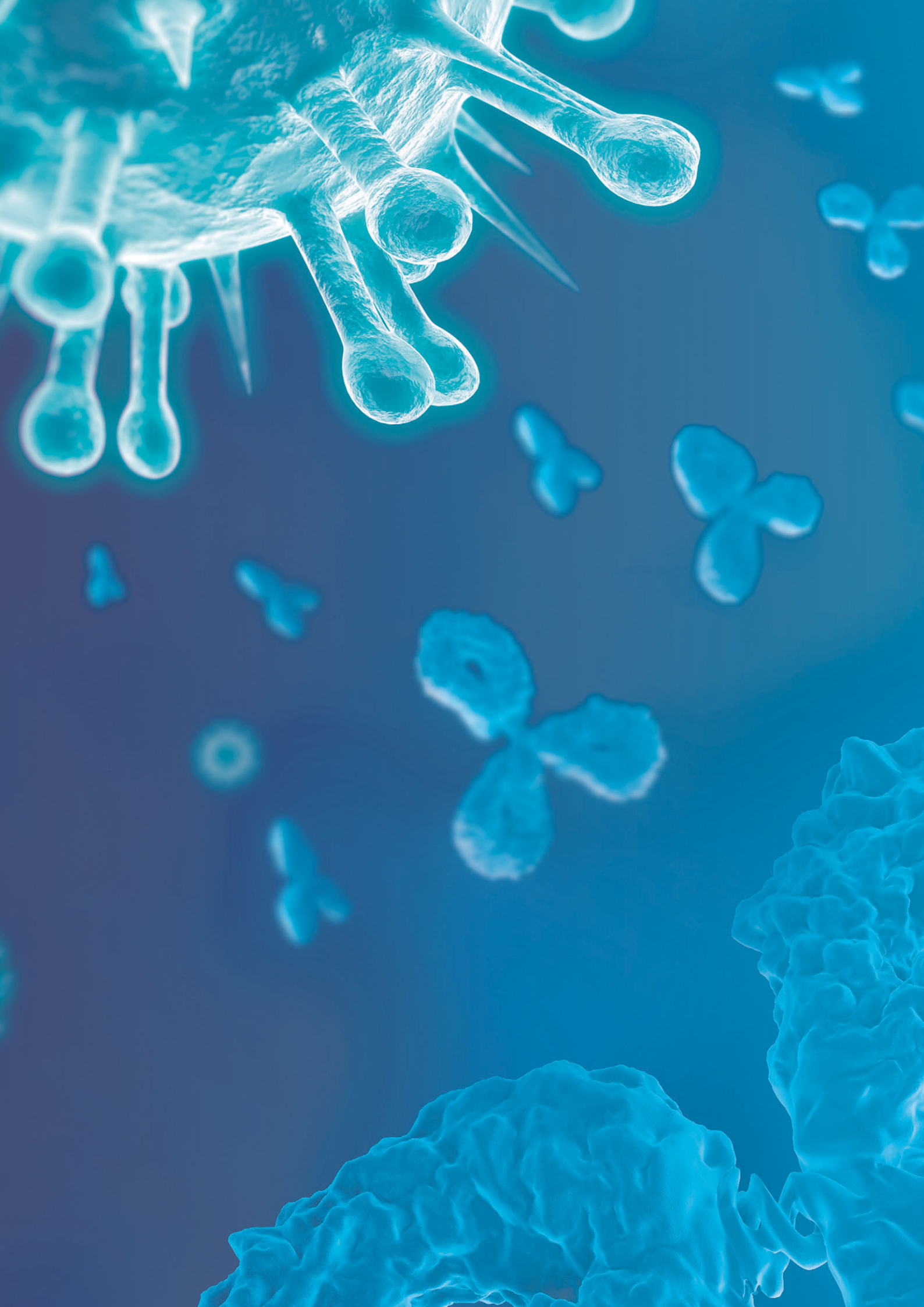
## **Barcelona Branch Office**

Pallars 99, Oficina 23  
08018 Barcelona  
Tel: +34 933 099 530

## **Madrid Branch Office**

Capitán Haya 1, Planta 15  
28020 Madrid  
Tel: +34 91 4184 353

**vircell**   
MICROBIOLOGISTS





# INFECTIOUS IMMUNOLOGY

- 06 **VirClia®**  
Fully automated indirect chemiluminescent immunoassays (CLIA) in monotest format for the diagnosis of infectious diseases.
- 11 **ELISA**  
Enzyme-linked immunosorbent assays for detecting antibodies against infectious diseases in human serum/plasma samples.
- 14 **DFA**  
Direct fluorescence assays for antigen detection in cell culture and clinical samples.
- 15 **IFA**  
Indirect immunofluorescence assays to detect antibodies against viruses, bacteria, parasites and fungi.
- 17 **Agglutination**  
The complete solution for the diagnosis of human brucellosis. Brucellacapt®, based on an immunocapture technique, detects non-agglutinating IgG and IgA antibodies, as well as the agglutinating antibodies. Rose Bengal is a fast, simple and sensitive assay widely used as a screening test in the diagnosis of brucellosis.
- 17 **VIRapid®**  
Immunochromatographic tests for antigen and antibody detection against infectious diseases. High value-added products in multitest format.

# VirClia®

## Chemiluminescence in Monotest

- Fully automated CLIA technology: excellent sensitivity and turnaround time.
- True monotest concept: each strip incorporates a calibrator and a negative control.
- Extensive menu: more than 80 references.
- Labour-saving: allows pipetting from primary sample tubes.
- All reagents included and ready-to-use.
- Cost effective: no extra consumption of reagents required.



Description	Cat. No.	Pack Size
ADENOVIRUS VIRCLIA® IgG MONOTEST	VCM002	24 tests
ASPERGILLUS GALACTOMANNAN Ag VIRCLIA® MONOTEST	VCM073	24 tests
BARTONELLA HENSELAE VIRCLIA® IgG MONOTEST	VCM046	24 tests
BARTONELLA HENSELAE VIRCLIA® IgM MONOTEST	VCM043	24 tests
BORDETELLA PERTUSSIS TOXIN VIRCLIA® IgG MONOTEST (quantitative)	VCM092	24 tests
BORRELIA VIRCLIA® IgG MONOTEST	VCM009	24 tests
BORRELIA VIRCLIA® IgM MONOTEST	VCM010	24 tests
BRUCELLA VIRCLIA® IgG MONOTEST	VCM005	24 tests
BRUCELLA VIRCLIA® IgM MONOTEST	VCM007	24 tests
CHAGAS VIRCLIA® IgG+IgM MONOTEST	VCM008	24 tests
CHIKUNGUNYA VIRCLIA® IgG MONOTEST	VCM059	24 tests
CHIKUNGUNYA VIRCLIA® IgM MONOTEST	VCM063	24 tests
CHLAMYDIA TRACHOMATIS VIRCLIA® IgA MONOTEST	VCM012	24 tests
CHLAMYDIA TRACHOMATIS VIRCLIA® IgG MONOTEST	VCM013	24 tests
CHLAMYDIA TRACHOMATIS VIRCLIA® IgM MONOTEST	VCM015	24 tests
CHLAMYDOPHILA PNEUMONIAE VIRCLIA® IgA MONOTEST	VCM016	24 tests
CHLAMYDOPHILA PNEUMONIAE VIRCLIA® IgG MONOTEST	VCM017	24 tests
CHLAMYDOPHILA PNEUMONIAE VIRCLIA® IgM MONOTEST	VCM018	24 tests
COXIELLA BURNETII VIRCLIA® IgG MONOTEST	VCM019	24 tests
COXIELLA BURNETII VIRCLIA® IgM MONOTEST	VCM020	24 tests
CYTOMEGALOVIRUS VIRCLIA® IgG AVIDITY MONOTEST	VCM038	12 tests
CYTOMEGALOVIRUS VIRCLIA® IgG MONOTEST (quantitative)	VCM021	24 tests
CYTOMEGALOVIRUS VIRCLIA® IgM MONOTEST (capture)	VCM022	24 tests
DENGUE NS1 Ag VIRCLIA® MONOTEST*	VCM058	24 tests
DENGUE VIRCLIA® IgG MONOTEST	VCM023	24 tests
DENGUE VIRCLIA® IgM MONOTEST (capture)	VCM024	24 tests
DIPHTHERIA VIRCLIA® IgG MONOTEST (quantitative)	VCM006	24 tests
EPSTEIN-BARR EA VIRCLIA® IgG MONOTEST	VCM044	24 tests



Description	Cat. No.	Pack Size
EPSTEIN-BARR EBNA VIRCLIA® IgG MONOTEST	VCM026	24 tests
EPSTEIN-BARR VCA VIRCLIA® IgA MONOTEST*	VCM090	24 tests
EPSTEIN-BARR VCA VIRCLIA® IgG MONOTEST	VCM027	24 tests
EPSTEIN-BARR VCA VIRCLIA® IgM MONOTEST	VCM028	24 tests
HELICOBACTER PYLORI VIRCLIA® IgA MONOTEST	VCM029	24 tests
HELICOBACTER PYLORI VIRCLIA® IgG MONOTEST	VCM030	24 tests
HEPATITIS E VIRCLIA® IgG AVIDITY MONOTEST*	VCM093	12 tests
HEPATITIS E VIRCLIA® IgG MONOTEST	VCM066	24 tests
HEPATITIS E VIRCLIA® IgM MONOTEST (capture)	VCM067	24 tests
HERPES SIMPLEX 1 VIRCLIA® IgG MONOTEST	VCM031	24 tests
HERPES SIMPLEX 1 VIRCLIA® IgM MONOTEST	VCM039	24 tests
HERPES SIMPLEX 1+2 VIRCLIA® IgG MONOTEST	VCM034	24 tests
HERPES SIMPLEX 1+2 VIRCLIA® IgM MONOTEST	VCM036	24 tests
HERPES SIMPLEX 2 VIRCLIA® IgG MONOTEST	VCM037	24 tests
HERPES SIMPLEX 2 VIRCLIA® IgM MONOTEST	VCM041	24 tests
HHV-6 VIRCLIA® IgG MONOTEST	VCM003	24 tests
HYDATIDOSIS VIRCLIA® IgG MONOTEST	VCM040	24 tests
INFECTIOUS MONONUCLEOSIS HETEROPHILE VIRCLIA® IgM MONOTEST	VCM001	24 tests
INFLUENZA A VIRCLIA® IgG MONOTEST	VCM042	24 tests
INFLUENZA B VIRCLIA® IgG MONOTEST	VCM045	24 tests
INVASIVE CANDIDIASIS (CAGTA) VIRCLIA® IgG MONOTEST	VCM094	24 tests
LEGIONELLA PNEUMOPHILA SG 1 VIRCLIA® IgG MONOTEST	VCM049	24 tests
LEGIONELLA PNEUMOPHILA SG 1 VIRCLIA® IgM MONOTEST	VCM050	24 tests
LEGIONELLA PNEUMOPHILA SG 1-6 VIRCLIA® IgG+IgM MONOTEST	VCM052	24 tests
LEISHMANIA VIRCLIA® IgG+IgM MONOTEST	VCM053	24 tests
LEPTOSPIRA VIRCLIA® IgG MONOTEST*	VCM081	24 tests
LEPTOSPIRA VIRCLIA® IgM MONOTEST	VCM014	24 tests
MEASLES VIRCLIA® IgG MONOTEST	VCM054	24 tests
MEASLES VIRCLIA® IgM MONOTEST	VCM057	24 tests
MUMPS VIRCLIA® IgG MONOTEST	VCM060	24 tests
MUMPS VIRCLIA® IgM MONOTEST	VCM061	24 tests
MYCOPLASMA PNEUMONIAE VIRCLIA® IgG MONOTEST	VCM062	24 tests
MYCOPLASMA PNEUMONIAE VIRCLIA® IgM MONOTEST	VCM064	24 tests
PARAINFLUENZA 1 VIRCLIA® IgG MONOTEST	VCM065	24 tests
PARAINFLUENZA 2 VIRCLIA® IgG MONOTEST	VCM068	24 tests
PARAINFLUENZA 3 VIRCLIA® IgG MONOTEST	VCM071	24 tests
PARVOVIRUS VIRCLIA® IgG MONOTEST	VCM075	24 tests

\* Available soon

Description	Cat. No.	Pack Size
PARVOVIRUS VIRCLIA® IgM MONOTEST (capture)	VCM076	24 tests
RESPIRATORY SYNCYTIAL VIRUS VIRCLIA® IgG MONOTEST	VCM077	24 tests
RICKETTSIA CONORII VIRCLIA® IgG MONOTEST	VCM080	24 tests
RICKETTSIA CONORII VIRCLIA® IgM MONOTEST	VCM082	24 tests
ROSS RIVER VIRUS VIRCLIA® IgG MONOTEST	VCM069	24 tests
ROSS RIVER VIRUS VIRCLIA® IgM MONOTEST	VCM070	24 tests
RUBELLA VIRCLIA® IgG MONOTEST (quantitative)	VCM083	24 tests
RUBELLA VIRCLIA® IgM MONOTEST (capture)	VCM084	24 tests
SYPHILIS VIRCLIA® IgG MONOTEST	VCM085	24 tests
SYPHILIS VIRCLIA® IgG+IgM MONOTEST	VCM086	24 tests
SYPHILIS VIRCLIA® IgM MONOTEST	VCM032	24 tests
TETANUS VIRCLIA® IgG MONOTEST (quantitative)	VCM004	24 tests
TICK-BORNE ENCEPHALITIS VIRCLIA® IgG MONOTEST	VCM047	24 tests
TICK-BORNE ENCEPHALITIS VIRCLIA® IgM MONOTEST	VCM048	24 tests
TOXOPLASMA VIRCLIA® IgG AVIDITY MONOTEST	VCM025	12 tests
TOXOPLASMA VIRCLIA® IgG MONOTEST (quantitative)	VCM087	24 tests
TOXOPLASMA VIRCLIA® IgM MONOTEST (capture)	VCM088	24 tests
TULAREMIA VIRCLIA® IgG+IgM MONOTEST	VCM011	24 tests
VARICELLA-ZOSTER VIRCLIA® IgG MONOTEST	VCM089	24 tests
VARICELLA-ZOSTER VIRCLIA® IgM MONOTEST	VCM091	24 tests
WEST NILE VIRUS VIRCLIA® IgG MONOTEST	VCM078	24 tests
WEST NILE VIRUS VIRCLIA® IgM MONOTEST	VCM079	24 tests
ZIKA VIRCLIA® IgG MONOTEST	VCM033	24 tests
ZIKA VIRCLIA® IgM MONOTEST	VCM035	24 tests

## Instruments

Description	Cat. No.	Capacity
VIRCLIA®	TB00300-CL	24 monotests
VIRCLIA® LOTUS	VCLTS-CL	40 monotests

## Software

Description	Cat. No.
VIRCOM COMMUNICATIONS SOFTWARE	VCOM

## VIRCLIA® LOTUS

Method: Chemiluminescence immunoassay  
Operation mode: Random access with continuous loading  
Strip loading capacity: 39 in loading rotor and 40 in reaction rotor  
Speed: First results in 1 h, 40 tests in 1 h 25 min, 80 tests in 2 h 30 min  
Sample tubes: Primary, 11-16 mm diameter  
Built-in scanner: Positive identification of samples and strips  
Sample loading capacity: 50 Primary, 50 dilution tubes and 6 bottles of diluent  
Multiparameter: Full compatibility of all VirClia assays  
Dimensions: W 75 cm x D 74 cm x H 65 cm



## VIRCLIA®

Method: EIA + CLIA Immunoassay  
Operation mode: Random access  
Strip loading capacity: 24 monotests  
Speed: 1 test in 50 min, 24 tests in 2 h  
Sample loading capacity: 192 primary sample tubes  
Intelligent racks: Automatic sample location management  
On-board camera: Probe-mounted camera allows remote troubleshooting  
Dimensions: W 64 cm x D 57 cm x H 45 cm



## Other

Description	Cat. No.	Kit contents
DECONTAMINATION SOLUTION FOR VIRCLIA® KITS	VCMDS	Decontamination solution: 3 x 20 ml
ELISA/CLIA VALIDATION SAMPLES KIT	EVVALS	24 vials x 0.2 ml of human serum, containing sodium azide and Proclin
VIRCELL DYE KIT	VDK	1 bottle with 20 ml of 1x dye concentrate; 15 vials with 0.5 ml of 40x dye concentrate; 5 x 96-well uncoated plates; 1 x 20 ml empty bottle
VIRCLIA® AUXILIARY REAGENTS	VCMAR	Washing solution: 4 x 50 ml (20x); Decontamination solution: 3 x 20 ml
VIRCLIA® AUXILIARY REAGENTS-W1	VCMAR-W1	Washing solution: 1000 ml (20x)
VIRCLIA® AUXILIARY REAGENTS-DS	VCMAR-DS	Decontamination solution: 6 x 20 ml
VIRCLIA® AUXILIARY REAGENTS-EDB	VCMAR-EDB	Diluent: 2 x 10 ml
VIRCLIA® AUXILIARY REAGENTS-TP	VCMAR-TP	25 predilution tubes
VIRCLIA® FRAME	VCFRAME	5 frames
VIRCLIA® LOTUS DYE KIT	VLDK	2 bottles with 20 ml of 1x dye concentrate; 3 vials with 1.8 ml of 4x dye concentrate; 6 x 96-well uncoated plates; 1 empty bottle



# ELISA

## Enzyme-linked immunosorbent assays

- Ready-to-use reagents.
- Sample predilution is not necessary.
- Colour-coded plates with individual break-apart wells.
- Semiquantitative protocols available for some parameters.
- $\mu$ -Capture technique for TORCH IgM determinations.
- G/M kits allow for customized testing of IgG and/or IgM.
- Suitable for automated ELISA systems.



### Single Tests

Description	Cat. No.	Pack size
ADENOVIRUS ELISA IgG/IgM	G/M1004	96 tests
BRUCELLA ELISA IgG	G1003	96 tests
BRUCELLA ELISA IgM	M1006	96 tests
CHAGAS ELISA IgG+IgM	T1020	96 tests
CHIKUNGUNYA ELISA IgG	G1010	96 tests
CHIKUNGUNYA ELISA IgM	M1010	96 tests
CHLAMYDIA ELISA IgG/IgM	G/M1003	96 tests
CHLAMYDIA TRACHOMATIS ELISA IgA	A1017	96 tests
CHLAMYDIA TRACHOMATIS ELISA IgG/IgM	G/M1017	96 tests
CHLAMYDOPHILA PNEUMONIAE ELISA IgA	A1007	96 tests
CHLAMYDOPHILA PNEUMONIAE ELISA IgG (includes calibrators)	G1007	96 tests
CHLAMYDOPHILA PNEUMONIAE ELISA IgM	M1007	96 tests
COXIELLA BURNETII ELISA IgG	G1001	96 tests
COXIELLA BURNETII ELISA IgM	M1001	96 tests
CYTOMEGALOVIRUS ELISA IgG (includes calibrators)	G1004	96 tests
CYTOMEGALOVIRUS ELISA IgM CAPTURE	M1004	96 tests
DENGUE ELISA IgG	G1018	96 tests
DENGUE ELISA IgM CAPTURE	M1018	96 tests
EPSTEIN-BARR EA ELISA IgG	G1205	96 tests
EPSTEIN-BARR EBNA ELISA IgG	G1105	96 tests
EPSTEIN-BARR VCA ELISA IgG	G1005	96 tests
EPSTEIN-BARR VCA ELISA IgM	M1005	96 tests
HELICOBACTER PYLORI ELISA IgA (includes calibrators)	A1022	96 tests
HELICOBACTER PYLORI ELISA IgG (includes calibrators)	G1022	96 tests
HERPES SIMPLEX 1 ELISA IgG/IgM (gG1 recombinant)	G/M1012	96 tests

Description	Cat. No.	Pack size
HERPES SIMPLEX 2 ELISA IgG/IgM (gG2 purified)	G/M1013	96 tests
HERPES SIMPLEX 1+2 ELISA IgG/IgM	G/M1016	96 tests
HYDATIDOSIS ELISA IgG	G1006	96 tests
INFLUENZA A ELISA IgG/IgM	G/M1007	96 tests
INFLUENZA B ELISA IgG/IgM	G/M1008	96 tests
LEGIONELLA PNEUMOPHILA SG 1 ELISA IgG	G1000	96 tests
LEGIONELLA PNEUMOPHILA SG 1 ELISA IgM	M1000	96 tests
LEGIONELLA PNEUMOPHILA SG 1-6 ELISA IgG+IgM	T1001	96 tests
LEISHMANIA ELISA IgG+IgM	T1000	96 tests
LEPTOSPIRA ELISA IgM	M1003	96 tests
MEASLES ELISA IgG/IgM	G/M1001	96 tests
MUMPS ELISA IgG/IgM	G/M1014	96 tests
MYCOPLASMA PNEUMONIAE ELISA IgG	G1002	96 tests
MYCOPLASMA PNEUMONIAE ELISA IgG/IgM	G/M1015	96 tests
MYCOPLASMA PNEUMONIAE ELISA IgM	M1002	96 tests
PARAINFLUENZA 1 ELISA IgG/IgM	G/M1009	96 tests
PARAINFLUENZA 2 ELISA IgG/IgM	G/M1010	96 tests
PARAINFLUENZA 3 ELISA IgG/IgM	G/M1011	96 tests
PARVOVIRUS ELISA IgG	G1031	96 tests
PARVOVIRUS ELISA IgM CAPTURE	M1031	96 tests
RESPIRATORY SYNCYTIAL VIRUS ELISA IgG/IgM	G/M1006	96 tests
RICKETTSIA CONORII ELISA IgG/IgM	G/M1005	96 tests
ROSS RIVER VIRUS ELISA IgG	G1011	96 tests
ROSS RIVER VIRUS ELISA IgM	M1011	96 tests
RUBELLA ELISA IgG (includes calibrators)	G1026	96 tests
RUBELLA ELISA IgM CAPTURE	M1026	96 tests
SYPHILIS ELISA IgG	G1060	96 tests
SYPHILIS ELISA IgG+IgM	T1060	96 tests
TETANUS ELISA IgG (includes calibrators)	G1008	96 tests
TOXOPLASMA ELISA IgG (includes calibrators)	G1027	96 tests
TOXOPLASMA ELISA IgM CAPTURE	M1027	96 tests
VARICELLA-ZOSTER ELISA IgG/IgM	G/M1002	96 tests
ZIKA ELISA IgG	G1023	96 tests
ZIKA ELISA IgM	M1023	96 tests

## MultiTests

Description	Cat. No.	Pack size
PNEUMOBACT ELISA IgM <i>L. pneumophila</i> sg 1, <i>M. pneumoniae</i> , <i>C. burnetii</i> and <i>C. pneumoniae</i>	M1040	96 tests

## Other ELISA products

Description	Cat. No.	Pack size
ELISA SORBENT (2 x 1.2 ml)	S001	92 tests
ELISA SORBENT (100 ml)	S001-100	4,000 tests
SERUM DILUENT FOR ELISA KITS (500 ml)	B0003	5,000 tests
WASH BUFFER FOR ELISA KITS (500 ml 20x)	B0001	3,000 tests

# DFA

## Direct immunofluorescence assays

- Antigen detection in cell culture and clinical samples. Single and Multitest kits available.
- Staining kits (AC-) contain monoclonal antibodies, PBS, mounting medium and controls.
- Inoculation and staining kits (K-) also include shell-vials of the appropriate cell line for the culture of the sample.



### Single Tests

Description	Cat. No.	Pack size
ADENOVIRUS MAb	ACADN	80 tests
ADENOVIRUS MAb & CULTURE	KADN	24 tests
CHLAMYDIA TRACHOMATIS MAb	ACCHTR	80 tests
CHLAMYDOPHILA PNEUMONIAE MAb	ACCHPN	80 tests
CYTOMEGALOVIRUS MAb	ACCMV	80 tests
CYTOMEGALOVIRUS MAb & CULTURE	KCMV	24 tests
CYTOMEGALOVIRUS MAb & CULTURE	KCMV-2	12 tests
ENTEROVIRUS MAb & CULTURE	KENT	24 tests
HERPES SIMPLEX 1+2 MAb	ACHERP	80 tests
HERPES SIMPLEX 1+2 MAb & CULTURE	KHERP	24 tests
INFLUENZA A AND B MAb (40+40 tests)	ACINF	80 tests

\* For more information about other available DFA products, please visit our website.

### MultiTests

Description	Cat. No.	Pack size
RESPIRATORY VIRAL SCREENING & IDENTIFICATION MAb	ACRESI	250 / 50 tests
RESPIRATORY VIRUS MAb & CULTURE	KVSXR	24 tests

### ACRESI components

Description	Cat. No.	Pack size
VIRAL SCREENING FITC-MAb	SFMRVS	250 tests
ADENOVIRUS IDENTIFICATION FITC-MAb	IFMADV	50 tests
INFLUENZA A IDENTIFICATION FITC-MAb	IFMINFA	50 tests
INFLUENZA B IDENTIFICATION FITC-MAb	IFMINFB	50 tests
PARAINFLUENZA 1 IDENTIFICATION FITC-MAb	IFMPIV1	50 tests
PARAINFLUENZA 2 IDENTIFICATION FITC-MAb	IFMPIV2	50 tests
PARAINFLUENZA 3 IDENTIFICATION FITC-MAb	IFMPIV3	50 tests
RESPIRATORY SYNCYTIAL VIRUS IDENTIFICATION FITC-MAb	IFMRSV	50 tests



# IFA

## Indirect immunofluorescence assays

- Single and Multitest kits available.
- Comprehensive panel of products widely recognized in scientific literature.
- Complete kits with ready-to-use reagents.
- Fully coated separated wells to facilitate the reading of the results.



### Single Tests

Description	Cat. No.	Pack size
ADENOVIRUS IFA SLIDE	SADN	100 tests
BARTONELLA HENSELAE & QUINTANA IFA IgG	PBAHQG	100 tests
BARTONELLA HENSELAE & QUINTANA IFA IgM	PBAHQM	100 tests
BARTONELLA HENSELAE & QUINTANA IFA SLIDE	SBAHQ	100 tests
CHAGAS IFA IgG+IgM	PCHAG	100 tests
CHAGAS IFA SLIDE	SCHAG	100 tests
CHLAMYDOPHILA PNEUMONIAE IFA IgG	PCHPNG	100 tests
CHLAMYDOPHILA PNEUMONIAE IFA IgM	PCHPNM	100 tests
CHLAMYDOPHILA PNEUMONIAE IFA SLIDE	SCHPN	100 tests
COXIELLA BURNETII IFA IgG	PCOBUG	100 tests
COXIELLA BURNETII IFA IgM	PCOBUM	100 tests
COXIELLA BURNETII I+II IFA IgG/IgM/IgA	PCOBU I+II	100 tests
COXIELLA BURNETII IFA SLIDE	SCOBU	100 tests
INFLUENZA A IFA SLIDE	SINFA	100 tests
INFLUENZA B IFA SLIDE	SINFB	100 tests
INVASIVE CANDIDIASIS (CAGTA) IFA IgG	PCAALG	50 tests
LEGIONELLA PNEUMOPHILA IFA IgG	PLEPNG	100 tests
LEGIONELLA PNEUMOPHILA IFA IgM	PLEPNM	100 tests
LEGIONELLA PNEUMOPHILA IFA SLIDE	SLEPN	100 tests
LEGIONELLA PNEUMOPHILA SG 1-6 IFA IgG	PLESXG	100 tests
LEGIONELLA SP IFA IgG	PLESPG	100 tests
LEGIONELLA SP IFA IgG	PLESPG-5	50 tests
LEISHMANIA IFA IgG	PLEDOG	100 tests
LEISHMANIA IFA SLIDE	SLEDO	100 tests
MYCOPLASMA PNEUMONIAE IFA IgG	PMYPNG	100 tests

Description	Cat. No.	Pack size
MYCOPLASMA PNEUMONIAE IFA IgM	PMYPNM	100 tests
MYCOPLASMA PNEUMONIAE IFA SLIDE	SMYPN	100 tests
RESPIRATORY SYNCYTIAL VIRUS IFA SLIDE	SVSR	100 tests
RICKETTSIA CONORII IFA IgG	PRICOG	100 tests
RICKETTSIA CONORII IFA IgM	PRICOM	100 tests
RICKETTSIA CONORII IFA SLIDE	SRICO	100 tests
RICKETTSIA TYPHI IFA IgG	PRITYG	100 tests
RICKETTSIA TYPHI IFA IgM	PRITYM	100 tests
RICKETTSIA TYPHI IFA IgG+IgM	PRITY	100 tests
RICKETTSIA TYPHI IFA SLIDE	SRITY	100 tests

## MultiTests

Description	Cat. No.	Pack size
PNEUMOBACT <i>L. pneumophila</i> sg 1, <i>M. pneumoniae</i> , <i>C. burnetii</i> , <i>C. pneumoniae</i> and <i>C. psittaci</i>	NBACT	20 tests
PNEUMOSLIDE IgG <i>L. pneumophila</i> sg 1, <i>M. pneumoniae</i> , <i>C. burnetii</i> , <i>C. pneumoniae</i> , adenovirus, respiratory syncytial virus, influenza A, influenza B, parainfluenza 1, 2 and 3 and cell control	NSLIDEG	20 tests
PNEUMOSLIDE IgM <i>L. pneumophila</i> sg 1, <i>M. pneumoniae</i> , <i>C. burnetii</i> , <i>C. pneumoniae</i> , adenovirus, respiratory syncytial virus, influenza A, influenza B, parainfluenza 1, 2 and 3 and cell control	NSLIDEM	10 tests
ZIKV-DENV-CHIKV IFA IgG Zika virus, dengue virus (1-4) and chikungunya virus	PZDCG	100 tests
ZIKV-DENV-CHIKV IFA IgM Zika virus, dengue virus (1-4) and chikungunya virus	PZDCM	100 tests

## Other IFA products

Description	Cat. No.	Pack size
IFA SORBENT	S002	100 tests
IFA SORBENT	S002-100	4,000 tests

# Agglutination

## Brucellacapt®

- Single-step immunocapture assay for the detection of total anti-Brucella antibodies.
- Detection of non-agglutinating IgG and IgA antibodies, as well as the agglutinating antibodies.
- Especially recommended for the diagnosis of chronic brucellosis and treatment follow-up.
- Fast and simple performance. Visual reading in 24 hours.
- The highest sensitivity and specificity recognized in international scientific literature.
- Screening and titration protocols available.



## Rose Bengal

- Rapid card test for the detection of agglutinating anti-Brucella antibodies in human serum.
- Widely used as a screening test.

Description	Cat. No.	Pack size
BRUCELLACAPT® (screening/titration)	BRUCAPT	96/24 tests
SERUM DILUENT FOR BRUCELLACAPT®	B0002	500 ml
ROSE BENGAL	RB001	125 tests

# VIRapid®

## Immunochromatographic tests

- Rapid detection with visual or automatic reading in just a few minutes.
- Specific and highly purified antigens or antibodies in both conjugates and lines.
- Product control line included in each device.



Description	Cat. No.	Pack size
VIRAPID® HYDATIDOSIS Detection of <i>Echinococcus granulosus</i> total antibodies	VR004	25 tests
VIRAPID® LEGIONELLA CULTURE Detection and identification of <i>Legionella</i> sp., <i>L. pneumophila</i> sg 1 and <i>L. pneumophila</i> sg 1-15 in samples from bacterial cultures	VR002	25 tests
VIRAPID® MONO M&G Detection of the 4 main serological markers for the EBV infectious mononucleosis (PB HA, VCA IgM, VCA IgG, EBNA IgG)	VR001	25 tests
VIRAPID® TULAREMIA Detection of <i>Francisella tularensis</i> total antibodies	VR006	10 tests





# MOLECULAR DIAGNOSTICS

- 20 **Speed-oligo®**  
PCR-based method coupled to a strip device for a quick multiplex detection of infectious diseases.
- 21 **qSPEED-OLIGO®**  
Multiplex Real Time PCR testing of comprehensive panels. Two-step procedure: screening and hybridization of positive samples.
- 22 **AmpliRun®**  
Quantified positive amplification controls that contain the complete purified, microbial genome of the infectious agent.
- 26 **AmpliRun® Total**  
Independent quality controls to monitor the entire NAT process, including extraction, amplification and detection. These external controls contain the complete inactivated microorganism in a matrix that mimics human specimens. Panels available.

# Speed-oligo®

## Oligochromatographic tests

- PCR-based method coupled to a strip device.
- Quick detection for infectious disease multiplex testing.
- Highly sensitive and specific detection thanks to a double hybridization.
- Cost effective - minimum equipment required.
- PCR mix prepared and lyophilized.



Description	Cat. No.	Pack size
SPEED-OLIGO® BACTERIAL MENINGITIS <i>Streptococcus pneumoniae</i> , <i>Haemophilus influenzae</i> and <i>Neisseria meningitidis</i>	SP006	24 tests
SPEED-OLIGO® BACTERIAL PNEUMONIA COMBI 3 types of strips for <i>C. pneumoniae</i> , <i>L. pneumophila</i> and <i>M. pneumoniae</i> (3x8 tests)	SP008	24 tests
SPEED-OLIGO® BORDETELLA <i>Bordetella parapertussis</i> , <i>Bordetella</i> sp. and <i>Bordetella pertussis</i>	SP011	40 tests
SPEED-OLIGO® CHLAMYDOPHILA PNEUMONIAE	SP003	40 tests
SPEED-OLIGO® DIRECT MYCOBACTERIUM TUBERCULOSIS <i>Mycobacterium</i> genus and <i>M. tuberculosis</i> complex	SP016	40 tests
SPEED-OLIGO® GROUP B STREPTOCOCCUS	SP004	40 tests
SPEED-OLIGO® LEGIONELLA PNEUMOPHILA	SP002	40 tests
SPEED-OLIGO® MYCOBACTERIA <i>Mycobacterium</i> genus, <i>M. tuberculosis</i> complex, <i>M. abscessus</i> , <i>M. avium</i> , <i>M. chelonae</i> , <i>M. fortuitum</i> , <i>M. gordonae</i> , <i>M. interjectum</i> , <i>M. intracellulare</i> , <i>M. kansasii</i> , <i>M. malmoense</i> , <i>M. marinum</i> / <i>M. ulcerans</i> , <i>M. peregrinum</i> , <i>M. scrofulaceum</i> and <i>M. xenopi</i>	SP005	40 tests
SPEED-OLIGO® MYCOPLASMA PNEUMONIAE	SP001	40 tests
SPEED-OLIGO® NOVEL INFLUENZA A H1N1 Influenza A and influenza A (H1N1) pdm09	SP015	40 tests

# qSPEED-OLIGO®

## Multiplex qPCR testing

- Two-step procedure: screening and hybridization of positive samples.
- Real time PCR multiplex mix of comprehensive panels (Cat. No. QS-M).
- Automatic identification in sealed oligochromatographic cassettes (Cat. No. QS-ID).
- Minimum hands-on-time: Pre-dispensed qPCR tubes.
- Lyophilized presentation.



Description	Cat. No.	Pack size
qSPEED-OLIGO® BACTERIAL MENINGITIS PANEL MIX	QS002M	48 tests
qSPEED-OLIGO® BACTERIAL MENINGITIS PANEL ID <i>H. influenzae, L. monocitogenes, N. meningitidis and S. pneumoniae</i>	QS002ID	24 tests
qSPEED-OLIGO® FLU/RSV/BOR MIX	QS004M	48 tests
qSPEED-OLIGO® FLU/RSV/BOR ID <i>Bordetella sp., Influenza A, Influenza B and Respiratory syncytial virus</i>	QS004ID	24 tests
qSPEED-OLIGO® STD-II PANEL URETHRITIS/CERVICITIS MIX *	QS009M	48 tests
qSPEED-OLIGO® STD-II PANEL URETHRITIS/CERVICITIS ID * <i>C. trachomatis, M. genitalium, N. gonorrhoeae, T. vaginalis and Ureaplasma spp.</i>	QS009ID	24 tests
qSPEED-OLIGO® VAGINAL PANEL MIX	QS010M	48 tests
qSPEED-OLIGO® VAGINAL PANE ID <i>Gardnerella vaginalis, Atopobium vaginae, Lactobacillus spp, Mycoplasma hominis, Ureaplasma spp (U. urealyticum and U. parvum), Trichomonas vaginalis, Candida spp. and Candida albicans</i>	QS010ID	24 tests
qSPEED-OLIGO® VIRAL MENINGITIS PANEL MIX	QS011M	48 tests
qSPEED-OLIGO® VIRAL MENINGITIS PANEL ID Enterovirus, Herpes simplex virus 1, Herpes simplex virus 2, Human parechovirus, Toscana virus, Varicella-zoster virus and West Nile virus	QS011ID	24 tests

\* Available soon

## Instrument

Description	Cat. No.	Capacity
qSPEED-OLIGO®	qSPS	48 tests



## qSPEED-OLIGO®

High throughput, up to 48 samples in less than 2 h.  
Integrated processor (RT PCR+ identification).  
Automated results interpretation.  
Cost effective: minimize cost for negative samples.  
Dimensions: W 85 cm x D 65 cm x H 78 cm.

# AmpliRun®

## DNA/RNA Amplification Controls

- Independent external run controls.
- Purified complete microbial genome.
- Any sequence can be amplified.
- Concentration range determined by qPCR.
- Suitable for all molecular testing platforms.
- Non-infectious.
- Lyophilized presentation.



Description	Cat. No.	Copies/μl
AMPLIRUN® ACANTHAMOEBA CASTELLANII DNA CONTROL	MBC054	10,000-20,000
AMPLIRUN® ADENOVIRUS 41 DNA CONTROL	MBC114	10,000-20,000
AMPLIRUN® ADENOVIRUS DNA CONTROL	MBC001	10,000-20,000
AMPLIRUN® ASPERGILLUS FUMIGATUS DNA CONTROL	MBC002	10,000-20,000
AMPLIRUN® BACILLUS CEREUS DNA CONTROL	MBC004	10,000-20,000
AMPLIRUN® BARTONELLA HENSELAE DNA CONTROL	MBC005	10,000-20,000
AMPLIRUN® BARTONELLA QUINTANA DNA CONTROL	MBC006	10,000-20,000
AMPLIRUN® BK VIRUS DNA CONTROL	MBC051	10,000-20,000
AMPLIRUN® BORDETELLA HOLMESII DNA CONTROL	MBC092	10,000-20,000
AMPLIRUN® BORDETELLA PARAPERTUSSIS DNA CONTROL	MBC007	10,000-20,000
AMPLIRUN® BORDETELLA PERTUSSIS DNA CONTROL	MBC008	10,000-20,000
AMPLIRUN® BORRELIA AFZELII DNA CONTROL	MBC078	10,000-20,000
AMPLIRUN® BORRELIA BURGDORFERI DNA CONTROL	MBC076	10,000-20,000
AMPLIRUN® BORRELIA GARINII DNA CONTROL	MBC077	10,000-20,000
AMPLIRUN® BRUCELLA ABORTUS DNA CONTROL	MBC009	10,000-20,000
AMPLIRUN® CAMPYLOBACTER JEJUNI DNA CONTROL	MBC088	10,000-20,000
AMPLIRUN® CANDIDA ALBICANS DNA CONTROL	MBC010	10,000-20,000
AMPLIRUN® CANDIDA AURIS DNA CONTROL	MBC127	10,000-20,000
AMPLIRUN® CHIKUNGUNYA VIRUS RNA CONTROL	MBC099	12,500-20,000
AMPLIRUN® CHLAMYDIA TRACHOMATIS DNA CONTROL	MBC012	10,000-20,000
AMPLIRUN® CHLAMYDOPHILA PNEUMONIAE DNA CONTROL	MBC011	10,000-20,000
AMPLIRUN® CHLAMYDOPHILA PSITTACI DNA CONTROL	MBC013	10,000-20,000
AMPLIRUN® CLOSTRIDIUM DIFFICILE DNA CONTROL	MBC043	10,000-20,000
AMPLIRUN® COCCIDIOIDES IMMITIS DNA CONTROL	MBC014	10,000-20,000
AMPLIRUN® CORONAVIRUS RNA CONTROL	MBC090	12,500-20,000
AMPLIRUN® CORONAVIRUS OC43 RNA CONTROL	MBC135-R	12,500-20,000
AMPLIRUN® COXIELLA BURNETII DNA CONTROL	MBC018	10,000-20,000

Description	Cat. No.	Copies/μl
AMPLIRUN® COXSACKIE A6 RNA CONTROL	MBC063	12,500-20,000
AMPLIRUN® COXSACKIE B1 RNA CONTROL	MBC061	12,500-20,000
AMPLIRUN® COXSACKIE B5 RNA CONTROL	MBC062	12,500-20,000
AMPLIRUN® CRYPTOCOCCUS NEOFORMANS DNA CONTROL	MBC015	10,000-20,000
AMPLIRUN® CRYPTOSPORIDIUM PARVUM DNA CONTROL	MBC126	700-2,000
AMPLIRUN® CYTOMEGALOVIRUS DNA CONTROL	MBC016	10,000-20,000
AMPLIRUN® DENGUE 1 VIRUS RNA CONTROL	MBC055	12,500-20,000
AMPLIRUN® DENGUE 2 VIRUS RNA CONTROL	MBC056	12,500-20,000
AMPLIRUN® DENGUE 3 VIRUS RNA CONTROL	MBC057	12,500-20,000
AMPLIRUN® DENGUE 4 VIRUS RNA CONTROL	MBC058	12,500-20,000
AMPLIRUN® EASTERN EQUINE ENCEPHALITIS RNA CONTROL	MBC097	12,500-20,000
AMPLIRUN® ECHOVIRUS 5 RNA CONTROL	MBC064	12,500-20,000
AMPLIRUN® ENTEROCOCCUS FAECALIS (vanB) DNA CONTROL	MBC115	10,000-20,000
AMPLIRUN® ENTEROCOCCUS FAECIUM (vanA) DNA CONTROL	MBC116	10,000-20,000
AMPLIRUN® ENTEROVIRUS 68 RNA CONTROL	MBC125	12,500-20,000
AMPLIRUN® ENTEROVIRUS 71 RNA CONTROL	MBC019	12,500-20,000
AMPLIRUN® EPSTEIN-BARR VIRUS DNA CONTROL	MBC065	10,000-20,000
AMPLIRUN® ESCHERICHIA COLI (EAEC) DNA CONTROL	MBC121	10,000-20,000
AMPLIRUN® ESCHERICHIA COLI (EIEC) DNA CONTROL	MBC122	10,000-20,000
AMPLIRUN® ESCHERICHIA COLI (EPEC) DNA CONTROL	MBC123	10,000-20,000
AMPLIRUN® ESCHERICHIA COLI (ETEC) DNA CONTROL	MBC124	10,000-20,000
AMPLIRUN® ESCHERICHIA COLI (VTEC) DNA CONTROL	MBC022	10,000-20,000
AMPLIRUN® FRANCISELLA TULARENSIS DNA CONTROL	MBC110	10,000-20,000
AMPLIRUN® GARDNERELLA VAGINALIS DNA CONTROL	MBC108	10,000-20,000
AMPLIRUN® GIARDIA INTESTINALIS DNA CONTROL	MBC119	10,000-20,000
AMPLIRUN® HAEMOPHILUS DUCREYI DNA CONTROL	MBC021	10,000-20,000
AMPLIRUN® HAEMOPHILUS INFLUENZAE DNA CONTROL	MBC020	10,000-20,000
AMPLIRUN® HELICOBACTER PYLORI DNA CONTROL	MBC049	10,000-20,000
AMPLIRUN® HERPES SIMPLEX 1 DNA CONTROL	MBC023	10,000-20,000
AMPLIRUN® HERPES SIMPLEX 2 DNA CONTROL	MBC024	10,000-20,000
AMPLIRUN® HHV-6 DNA CONTROL	MBC025	10,000-20,000
AMPLIRUN® HHV-8 DNA CONTROL	MBC128	10,000-20,000
AMPLIRUN® HUMAN PARAINFLUENZA 1 RNA CONTROL	MBC105	12,500-20,000
AMPLIRUN® INFLUENZA A H1 RNA CONTROL	MBC028	12,500-20,000
AMPLIRUN® INFLUENZA A H3 RNA CONTROL	MBC029	12,500-20,000
AMPLIRUN® INFLUENZA A H5 RNA CONTROL	MBC052	12,500-20,000
AMPLIRUN® INFLUENZA B RNA CONTROL	MBC030	12,500-20,000



Description	Cat. No.	Copies/μl
AMPLIRUN® JAPANESE ENCEPHALITIS RNA CONTROL	MBC134	12,500-20,000
AMPLIRUN® KLEBSIELLA PNEUMONIAE (NDM-1) DNA CONTROL	MBC107	10,000-20,000
AMPLIRUN® LEGIONELLA PNEUMOPHILA DNA CONTROL	MBC031	10,000-20,000
AMPLIRUN® LEISHMANIA CHAGASI DNA CONTROL	MBC060	10,000-20,000
AMPLIRUN® LEISHMANIA INFANTUM DNA CONTROL	MBC032	10,000-20,000
AMPLIRUN® LISTERIA MONOCYTOGENES DNA CONTROL	MBC033	10,000-20,000
AMPLIRUN® MEASLES RNA CONTROL	MBC046	12,500-20,000
AMPLIRUN® MERS CORONAVIRUS RNA CONTROL	MBC132	12,500-20,000
AMPLIRUN® MORAXELLA CATARRHALIS DNA CONTROL	MBC117	10,000-20,000
AMPLIRUN® MUMPS RNA CONTROL	MBC040	12,500-20,000
AMPLIRUN® MYCOBACTERIUM AVIUM DNA CONTROL	MBC086	10,000-20,000
AMPLIRUN® MYCOBACTERIUM INTRACELLULARE DNA CONTROL	MBC087	10,000-20,000
AMPLIRUN® MYCOBACTERIUM KANSASII DNA CONTROL	MBC095	10,000-20,000
AMPLIRUN® MYCOBACTERIUM TUBERCULOSIS DNA CONTROL	MBC034	10,000-20,000
AMPLIRUN® MYCOBACTERIUM ULCERANS DNA CONTROL	MBC094	10,000-20,000
AMPLIRUN® MYCOPLASMA GENITALIUM DNA CONTROL	MBC085	10,000-20,000
AMPLIRUN® MYCOPLASMA HOMINIS DNA CONTROL	MBC084	10,000-20,000
AMPLIRUN® MYCOPLASMA PNEUMONIAE DNA CONTROL	MBC035	10,000-20,000
AMPLIRUN® NEISSERIA GONORRHOEAE DNA CONTROL	MBC075	10,000-20,000
AMPLIRUN® NEISSERIA MENINGITIDIS SG A DNA CONTROL	MBC036	10,000-20,000
AMPLIRUN® NEISSERIA MENINGITIDIS SG B DNA CONTROL	MBC066	10,000-20,000
AMPLIRUN® NEISSERIA MENINGITIDIS SG C DNA CONTROL	MBC053	10,000-20,000
AMPLIRUN® NOROVIRUS RNA CONTROL	MBC111	700-2,000
AMPLIRUN® NOVEL INFLUENZA A H1N1 RNA CONTROL	MBC082	12,500-20,000
AMPLIRUN® ORIENTIA TSUTSUGAMUSHI DNA CONTROL	MBC106	10,000-20,000
AMPLIRUN® PAPILOMAVIRUS TYPE 16 DNA CONTROL	MBC067	10,000-20,000
AMPLIRUN® PAPILOMAVIRUS TYPE 18 DNA CONTROL	MBC068	10,000-20,000
AMPLIRUN® PARAINFLUENZA 1 RNA CONTROL	MBC037	12,500-20,000
AMPLIRUN® PARAINFLUENZA 2 RNA CONTROL	MBC038	12,500-20,000
AMPLIRUN® PARAINFLUENZA 3 RNA CONTROL	MBC039	12,500-20,000
AMPLIRUN® PARAINFLUENZA 4 A RNA CONTROL	MBC050	12,500-20,000
AMPLIRUN® PARECHOVIRUS 1 RNA CONTROL	MBC102	12,500-20,000
AMPLIRUN® PARVOVIRUS B19 (plasmid) DNA CONTROL	MBC080	10,000-20,000
AMPLIRUN® RESPIRATORY SYNCYTIAL VIRUS (subtype A) RNA CONTROL	MBC041	12,500-20,000
AMPLIRUN® RESPIRATORY SYNCYTIAL VIRUS (subtype B) RNA CONTROL	MBC083	12,500-20,000
AMPLIRUN® RHINOVIRUS RNA CONTROL	MBC091	12,500-20,000
AMPLIRUN® RICKETTSIA CONORII DNA CONTROL	MBC042	10,000-20,000

Description	Cat. No.	Copies/μl
AMPLIRUN® ROSS RIVER VIRUS RNA CONTROL	MBC130	12,500-20,000
AMPLIRUN® ROTAVIRUS RNA CONTROL	MBC026	12,500-20,000
AMPLIRUN® RUBELLA RNA CONTROL	MBC113	12,500-20,000
AMPLIRUN® SALMONELLA ENTERITIDIS DNA CONTROL	MBC003	10,000-20,000
AMPLIRUN® SALMONELLA TYPHI DNA CONTROL	MBC044	10,000-20,000
AMPLIRUN® SHIGELLA FLEXNERI DNA CONTROL	MBC089	10,000-20,000
AMPLIRUN® ST LOUIS ENCEPHALITIS VIRUS RNA CONTROL	MBC101	12,500-20,000
AMPLIRUN® STAPHYLOCOCCUS AUREUS (mecA-) DNA CONTROL	MBC073	10,000-20,000
AMPLIRUN® STAPHYLOCOCCUS AUREUS (mecA+) DNA CONTROL	MBC074	10,000-20,000
AMPLIRUN® STREPTOCOCCUS AGALACTIAE DNA CONTROL	MBC071	10,000-20,000
AMPLIRUN® STREPTOCOCCUS PNEUMONIAE DNA CONTROL	MBC070	10,000-20,000
AMPLIRUN® TICK-BORNE ENCEPHALITIS VIRUS RNA CONTROL	MBC045	12,500-20,000
AMPLIRUN® TOSCANA VIRUS RNA CONTROL	MBC129	12,500-20,000
AMPLIRUN® TOXOPLASMA GONDII DNA CONTROL	MBC047	10,000-20,000
AMPLIRUN® TREPONEMA PALLIDUM DNA CONTROL	MBC109	700-2,000
AMPLIRUN® TRICHOMONAS VAGINALIS DNA CONTROL	MBC079	10,000-20,000
AMPLIRUN® TRYPANOSOMA CRUZI DNA CONTROL	MBC059	10,000-20,000
AMPLIRUN® TRYPANOSOMA RANGELI DNA CONTROL	MBC093	10,000-20,000
AMPLIRUN® UREAPLASMA PARVUM DNA CONTROL	MBC133	10,000-20,000
AMPLIRUN® UREAPLASMA UREALYTICUM DNA CONTROL	MBC112	10,000-20,000
AMPLIRUN® VARICELLA-ZOSTER VIRUS DNA CONTROL	MBC048	10,000-20,000
AMPLIRUN® VENEZUELAN EQUINE ENCEPHALITIS RNA CONTROL	MBC096	12,500-20,000
AMPLIRUN® VIBRIO CHOLERAЕ DNA CONTROL	MBC118	10,000-20,000
AMPLIRUN® WEST NILE VIRUS RNA CONTROL	MBC069	12,500-20,000
AMPLIRUN® WESTERN EQUINE ENCEPHALITIS RNA CONTROL	MBC098	12,500-20,000
AMPLIRUN® YELLOW FEVER VIRUS RNA CONTROL	MBC100	12,500-20,000
AMPLIRUN® YERSINIA ENTEROCOLITICA DNA CONTROL	MBC027	10,000-20,000
AMPLIRUN® ZIKA VIRUS (ASIAN LINEAGE) RNA CONTROL	MBC103	12,500-20,000
AMPLIRUN® ZIKA VIRUS RNA CONTROL	MBC072	12,500-20,000

# AmpliRun® Total

## Extraction & Amplification Controls

- Independent full process controls.
- Monitor from sample extraction to interpretation of results.
- Complete inactivated microorganism in a matrix that mimics human specimens.
- Comprehensive panels available.
- Non-infectious.
- Lyophilized presentation.



Description	Cat. No.	Fill volume	Pack size
AMPLIRUN® TOTAL ATYPICAL BACTERIAL PNEUMONIA CONTROL (SWAB) <i>Bordetella pertussis</i> , <i>Chlamydomphila pneumoniae</i> , <i>Chlamydomphila psittaci</i> , <i>Coxiella burnetii</i> , <i>Legionella pneumophila</i> , <i>Mycoplasma pneumoniae</i>	MBTC022-R	500 µL	10 vials
AMPLIRUN® TOTAL CLOSTRIDIUM DIFFICILE RT027 CONTROL (STOOL) <i>Clostridium difficile</i> RT027	MBTC026-R	500 µL	10 vials
AMPLIRUN® TOTAL CMV CONTROL (PLASMA) Cytomegalovirus (International Units - hCMV Merlin strain)	MBTC018-R	200 µL	10 vials
AMPLIRUN® TOTAL CT/NG CONTROL (EXUDATE) <i>Chlamydia trachomatis</i> , <i>Neisseria gonorrhoeae</i>	MBTC006	1 mL	10 vials
AMPLIRUN® TOTAL CT/NG CONTROL (URINE) <i>Chlamydia trachomatis</i> , <i>Neisseria gonorrhoeae</i>	MBTC003	1 mL	10 vials
AMPLIRUN® TOTAL CT/NG/TV/MGE CONTROL (SWAB) <i>Chlamydia trachomatis</i> , <i>Neisseria gonorrhoeae</i> , <i>Trichomonas vaginalis</i> ,	MBTC024-R	1 mL	10 vials
AMPLIRUN® TOTAL EBV CONTROL (PLASMA) Epstein-Barr virus (International Units - EBV B95-8 strain)	MBTC019	200 µL	10 vials
AMPLIRUN® TOTAL FLU A/FLU B/RSV (SWAB) Influenza A, Influenza B, RSV	MBTC028	500 µL	10 vials
AMPLIRUN® TOTAL GASTROINTESTINAL BACTERIAL PANEL CONTROL (STOOL) <i>Campylobacter jejuni</i> , <i>Clostridium difficile</i> , <i>Escherichia coli</i> (EHEC), <i>Salmonella enteritidis</i> , <i>Shigella flexneri</i> , <i>Yersinia enterocolitica</i>	MBTC021	500 µL	10 vials
AMPLIRUN® TOTAL HSV-1/HSV-2 CONTROL (CSF) Herpes simplex virus 1/2	MBTC009	200 µL	10 vials
AMPLIRUN® TOTAL HSV-1/HSV-2 CONTROL (PLASMA) Herpes simplex virus 1/2	MBTC012	200 µL	10 vials

Description	Cat. No.	Fill volume	Pack size
AMPLIRUN® TOTAL HSV-1/HSV-2/VZV CONTROL (EXUDATE) Herpes simplex virus & Varicella-zoster virus	MBTC016	200 µL	10 vials
AMPLIRUN® TOTAL MDR-TB VERIFICATION & CONTROL PANEL (SPUTUM) 2 vials x <i>Mycobacterium tuberculosis</i> 2 vials x <i>Mycobacterium tuberculosis</i> RIF resistant rpoB mutation (S531L) 2 vials x <i>Mycobacterium tuberculosis</i> RIF resistant rpoB mutation (H526D) 2 vials x <i>Mycobacterium tuberculosis</i> INH RESISTANT katG mutation (S315T) 2 vials x <i>Mycobacterium tuberculosis</i> INH RESISTANT inhA mutation (C15T)	MBTC027	1 mL	10 vials (5x2)
AMPLIRUN® TOTAL MTB CONTROL (SPUTUM) <i>Mycobacterium tuberculosis</i>	MBTC013	1 mL	10 vials
AMPLIRUN® TOTAL MTB INH RESISTANT CONTROL (SPUTUM) 5 vials x <i>Mycobacterium tuberculosis</i> katG mutation (S315T) 5 vials x <i>Mycobacterium tuberculosis</i> inhA mutation (C15T)	MBTC015	1 mL	10 vials (2x5)
AMPLIRUN® TOTAL MTB RIF RESISTANT CONTROL (SPUTUM) 5 vials x <i>Mycobacterium tuberculosis</i> rpoB mutation (S531L) 5 vials x <i>Mycobacterium tuberculosis</i> rpoB mutation (H526D)	MBTC014	1 mL	10 vials (2x5)
AMPLIRUN® TOTAL RESPIRATORY VIRAL PANEL CONTROL (SWAB) Adenovirus 4, coronavirus, influenza A H3N2, influenza B, novel influenza A H1N1, parainfluenza 1, parainfluenza 2, parainfluenza 3, RSV (subtype A), RSV (subtype B)	MBTC020	200 µL	10 vials
AMPLIRUN® TOTAL MENINGITIS/ENCEPHALITIS CONTROL (CSF)* Enterovirus, herpes simplex virus 1, herpes simplex virus 2, human herpes virus 6, human parechovirus, varicella zoster virus, Cytomegalovirus (CMV), <i>Escherichia coli</i> K1, <i>Haemophilus influenzae</i> , <i>Listeria monocytogenes</i> , <i>Neisseria meningitidis</i> , <i>Streptococcus agalactiae</i> , <i>Streptococcus pneumoniae</i> , <i>Cryptococcus neoformans</i>	MBTC025-R	200 µL	10 vials (2x5)
AMPLIRUN® TOTAL ZIKV/DENV/CHIKV CONTROL (PLASMA) Zika virus, dengue virus (1-4), chikungunya virus	MBTC023	200 µL	10 vials

\* Available soon





# OTHERS

## 30 **Transport Medium**

Collection and transport system for viruses, chlamydia and mycoplasma.

## 31 **Cell Lines**

Accessible cell culture for human clinical virology. Ready-to-use and bulk presentations.

# Transport Medium

For the collection and preservation of viruses, chlamydia, and mycoplasma

- Versatile medium, valid for different types of samples, microorganisms, and diagnostic methods.
- Avoids drying up of the sample.
- Improves microorganisms viability between collection and inoculation.
- Decreases bacterial overgrowth in contaminated samples.
- Suitable for samples to be assayed by PCR.



Description	Cat. No.	Commercial swab	Pack size
TRANSPORT MEDIUM - 2 ml	TM001	2 sterile Rayon swabs	50 units
TRANSPORT MEDIUM - 2 ml	TM006	2 sterile Dacron swabs	50 units
TRANSPORT MEDIUM - 2 ml	TM003	1 sterile Dacron swab	50 units
TRANSPORT MEDIUM - 2 ml	TM005	No swab included	50 units
TRANSPORT MEDIUM - 3 ml	TM008	1 sterile flocked swab	50 units
TRANSPORT MEDIUM - 3 ml	TM002	No swab included	50 units

# Cell Lines

## Accesible cell culture for human clinical virology

- Ready-to-use (shell-vial and tubes) and bulk (flasks and suspensions) presentations.
- Consistent quality · Fresh and frozen cells.
- Complementary products available: monoclonal antibodies and transport media.



Description	Cat. No.	Pack size
A549/HEp-2/MDCK CELL LINE (SHELL-VIAL)	VSMX	24 shell-vials
A549 CELL LINE (FLASK)	FTA5	1 flask (75 cm <sup>2</sup> )
A549 CELL LINE (SHELL-VIAL)	VSA5	24 shell-vials
A549 CELL LINE (TUBE)	VTA5	24 tubes
HEp-2 CELL LINE (FLASK)	FTHE	1 flask (75 cm <sup>2</sup> )
HEp-2 CELL LINE (SHELL-VIAL)	VSHE	24 shell-vials
HEp-2 CELL LINE (TUBE)	VTHE	24 tubes
LLC-MK2 CELL LINE (FLASK)	FTLL	1 flask (75 cm <sup>2</sup> )
LLC-MK2 CELL LINE (SHELL-VIAL)	VSLL	24 shell-vials
LLC-MK2 CELL LINE (TUBE)	VTLL	24 tubes
MDCK CELL LINE (FLASK)	FTMD	1 flask (75 cm <sup>2</sup> )
MDCK CELL LINE (SHELL-VIAL)	VSMD	24 shell-vials
MDCK CELL LINE (TUBE)	VTMD	24 tubes
MDCK-SIAT1 CELL LINE (FLASK)	FTMS	1 flask (75 cm <sup>2</sup> )
MRC-5 CELL LINE (FLASK)	FTMR	1 flask (75 cm <sup>2</sup> )
MRC-5 CELL LINE (SHELL-VIAL)	VSMR	24 shell-vials
MRC-5 CELL LINE (SUSPENSION)	SMR	1 suspension
MRC-5 CELL LINE (TUBE)	VTMR	24 tubes
RD CELL LINE (FLASK)	FTRD	1 flask (75 cm <sup>2</sup> )
RD CELL LINE (SHELL-VIAL)	VSRD	24 shell-vials
RD CELL LINE (TUBE)	VTRD	24 tubes
VERO CELL LINE (FLASK)	FTVE	1 flask (75 cm <sup>2</sup> )
VERO CELL LINE (SHELL-VIAL)	VSVE	24 shell-vials
VERO CELL LINE (TUBE)	VTVE	24 tubes

For custom cell lines or formats, please contact our Sales Department.

## Ordering Information

### Placing orders

When ordering, please specify:

- Company name
- Ship to and bill to address
- Product catalogue number and description
- Unit size and quantity
- Special shipping conditions, if any

### Free samples policy

Samples are available free of charge for testing purposes. Please contact your Area Manager to ask for our sample request form.

### Order cancellation

Requests for cancellation should be submitted one week in advance for cell culture products. For the rest of the product lines, three days advanced notice is required.

## Terms and Conditions

### Prices

Product price shall be the prices specified in our current price list on the date of order. We reserve the right to revise our prices at any time with at least 1 month prior notice. Unless we state otherwise in writing, all prices are ex-works.

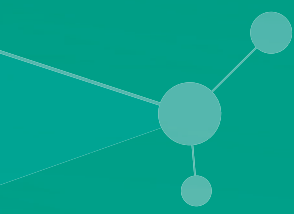
The validity period for preorders/orders awaiting prepayment will be one month. After that time, order confirmation is required.

## Technical Support

For technical assistance and product information, please visit our website or contact our Technical Service Department at [customerservice@vircell.com](mailto:customerservice@vircell.com)

We strive to answer all emails within 24 hours, and most are answered in substantially less time.







Information correct at time of print. Product availability may vary from country to country, please contact your Vircell representative for information. Products may be for Research Use Only and not for use in diagnostic procedures in the USA and Canada.



Distributed by Abacus dx

1800 ABACUS (AUS) 0800 222 170 (NZ) | [info@abacusdx.com](mailto:info@abacusdx.com) | [www.abacusdx.com](http://www.abacusdx.com)

abacus dx